

THE LONG WAY HOME

ADRIAN TĂBĂCARU

A ♩=133 **B** **C**

8 16 12

37 **D** *ff*
Glo ri e Lu na Glo ri e

43
So lis Glo ri E

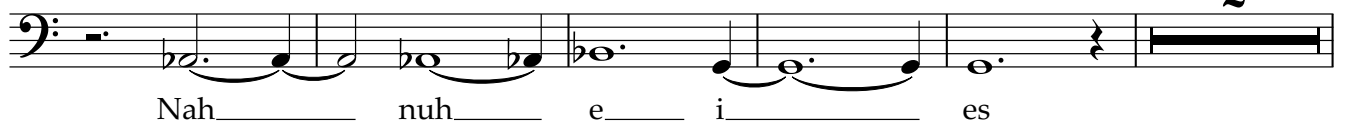
49 **E** *rit.* *a Tempo* **F** *p*
6 4
E luh suh

62
Dah e ah

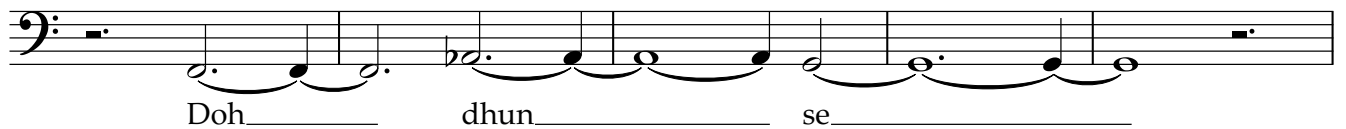
67
Luh pur uht Zuh

72
bah vuh Pah

75
uh Kun hes

79 **G**

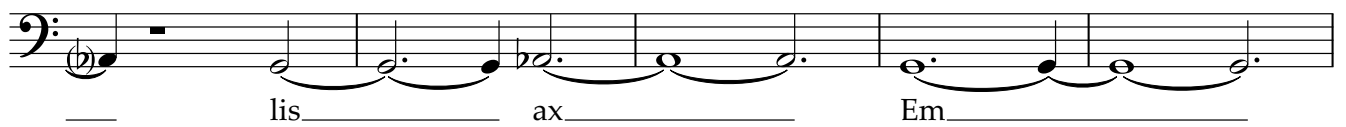
86



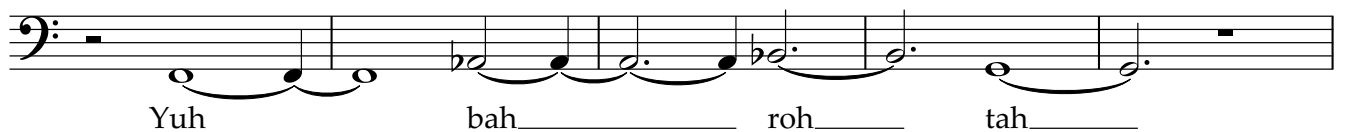
91



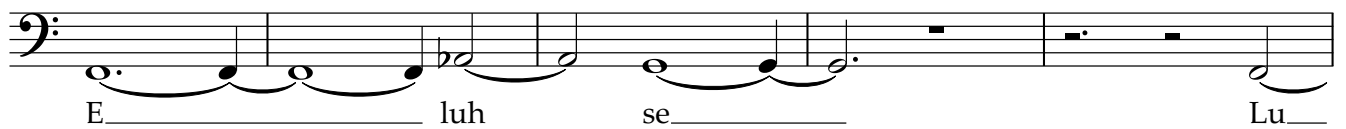
97



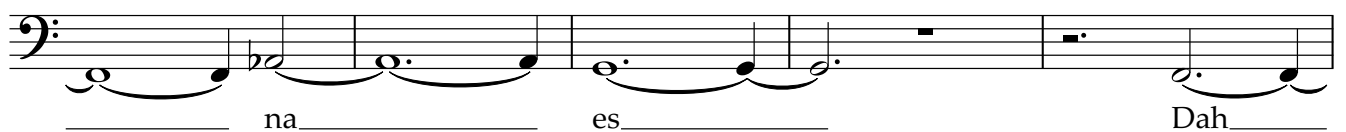
102



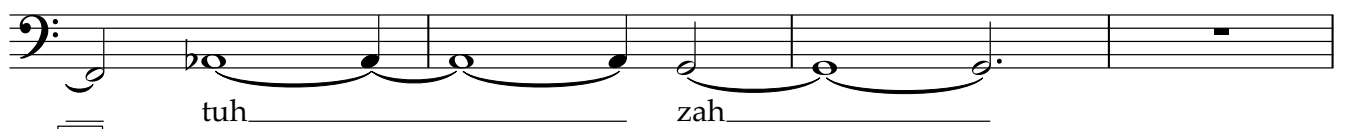
107



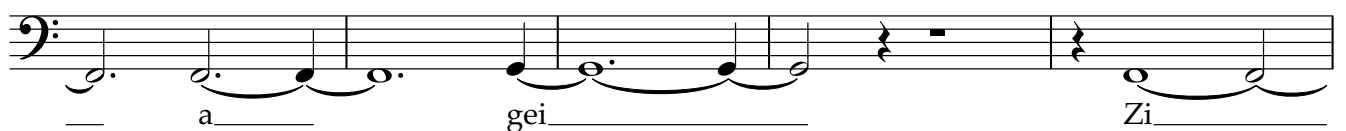
112



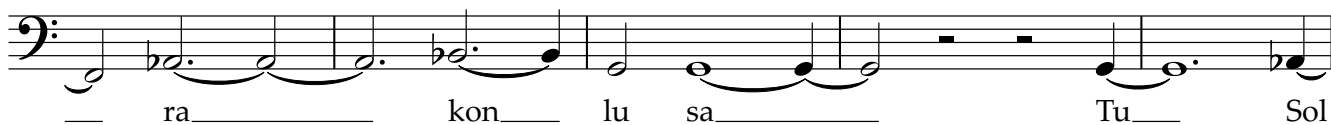
117

121 **H**

126

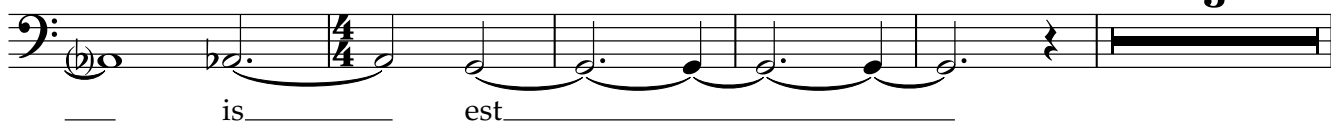


131



136

I ♩=140

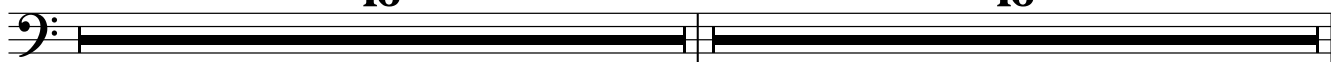


144 J

16

K

16

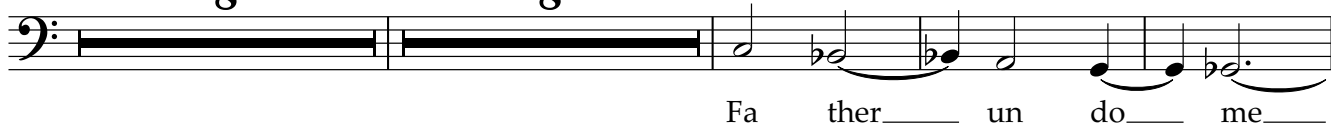


176 L

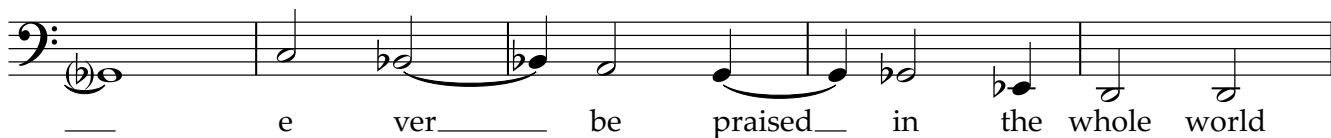
8

M

8

N *ff*

195

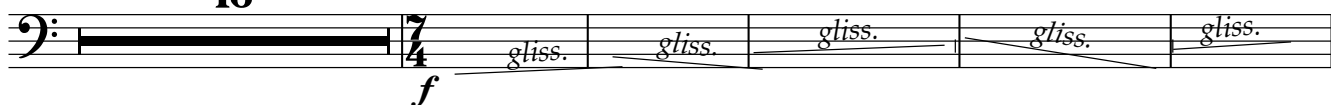


200 O

16

P

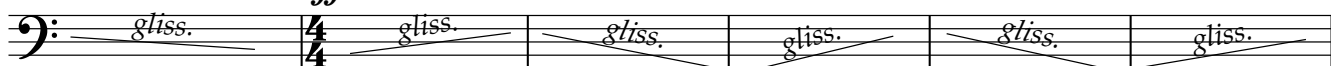
Glissandi "Orr"



223

Q

Shrill

ff

229

Sweep Scream "Uuu"

fff