

Bass Drum

THE LONG WAY HOME

ADRIAN TĂBĂCARU

A ♩=133 **B**

8 7

f

19

25 **C**

ff

31

37 **D** *rit.* **E** **F** a Tempo

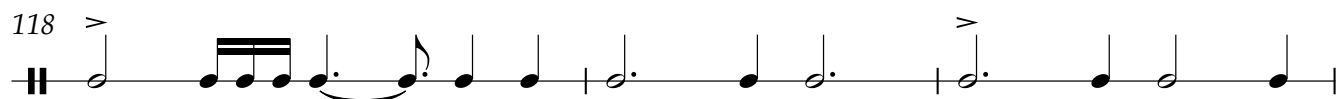
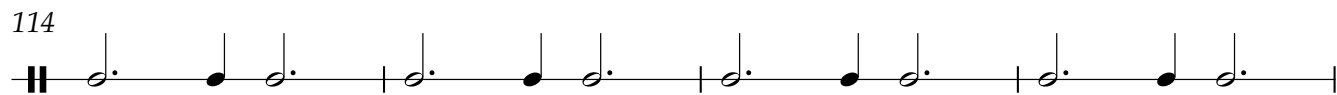
12 6 7/4

pp

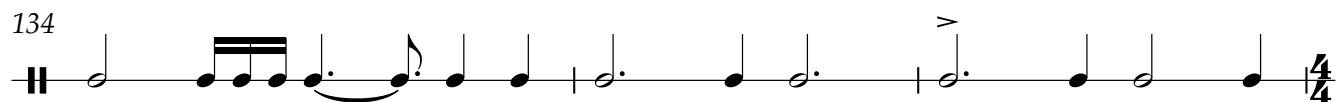
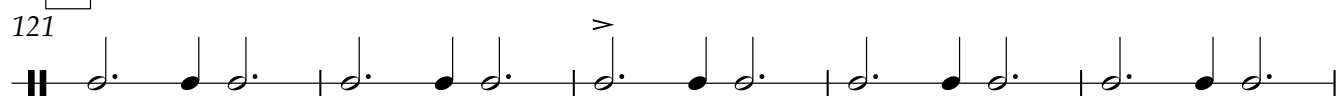
57

62

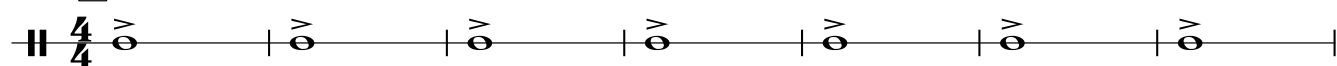
66



H

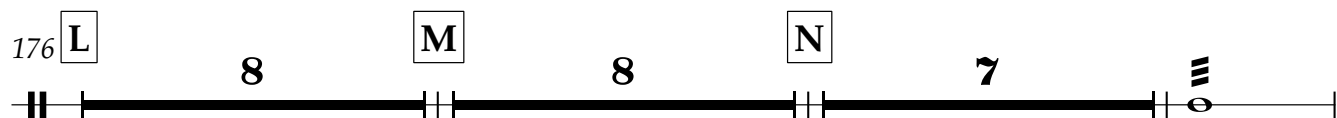


137 **I** ♩=140



K

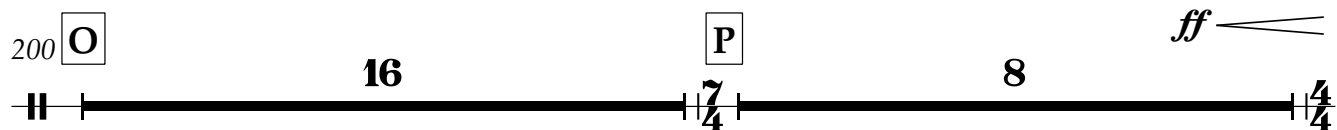
ff



M

N

ff



P

